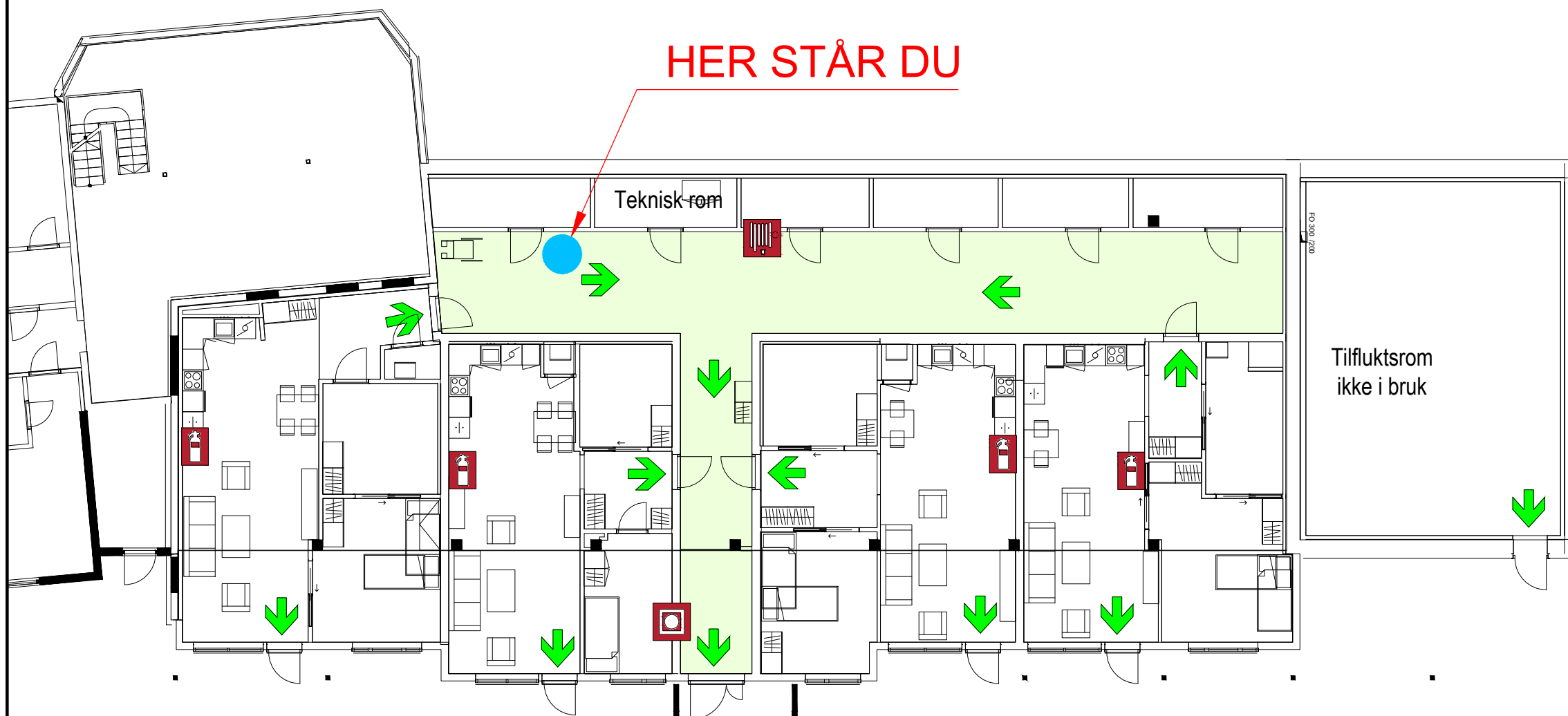


RØMNINGSPLAN

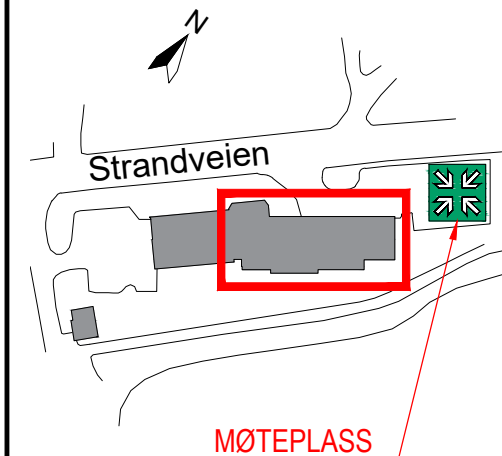
KJELLER











BRANNINSTRUKS

- Varsle med brannmelder
- Ring brannvesen **110**
- Forsøk å redde
- Forsøk å slukke
- Evakuer til møteplass

LOKALISERINGSFIGUR



SYMBOLFORKLARING

- | | | | | | | | |
|---|--|---|---|---|-------------------------------------|---|--|
|  | HER STÅR DU
YOU ARE HERE |  | BRANNSLANGE
FIRE HOSE |  | RØMNINGSRETNING
ESCAPE DIRECTION |  | SAMLINGSPLASS
MEETING POINT |
|  | MANUELL BRANNMELDER
MANUAL CALL POINT |  | HÅNDSLOKKER
PORTABLE FIRE EXTINGUISHER |  | RØMNINGSTRASÉ
ESCAPE ROUTING |  | RØMNINGSTRAPP/VEI
ESCAPE STAIRS/ROUTE |

TEGNET DATO: 25.11.19 TEGNET AV: RU REVIDERT DATO: REVISJON:

NAVNEADRESSE: Strandveien 14

ETASJE: Kjeller

TEGNINGSNUMMER: 101295-RU1_02

FIRESAFE / FIRESAFE CONSULTING
 Kanalveien 105A, 5068 BERGEN
 Tlf: 55 19 55 30 / 09110
 firmapost@firesafe.no
 www.firesafe.no