



# CONTAINER

PROJECT: 2x30' (10' wide) compound	
Labels	Rcontainer AS
Water installation	PVC
Electricity	230V, 50Hz(NO)
Forklift openings	250x90/1200 mm
Ceiling internal finishing	Chipboard white
Floor plate	Cement-bonded chipboard
Floor internal finishing	PVC-2mm, FORBO SAFESTEP R12
Wall internal finishing	Chipboard white/Fe-RAL 9002
Frame colour	RAL 7016
Panel external colour	RAL 7037
Roof external colour	RAL 9002
Ceiling insulation(type/mm)	MW/100 mm
Wall insulation(type/mm)	MW/100/60 mm
Floor insulation(type/mm)	MW/100 mm
Internal height	2,500 m
Snowload capacity	1 kN/m <sup>2</sup>
Number of assembled units	2
Number of trans-pack units	0

MIXING TAB AND SHOWER HEAD FOR SINK (SINK NOT INCLUDED)



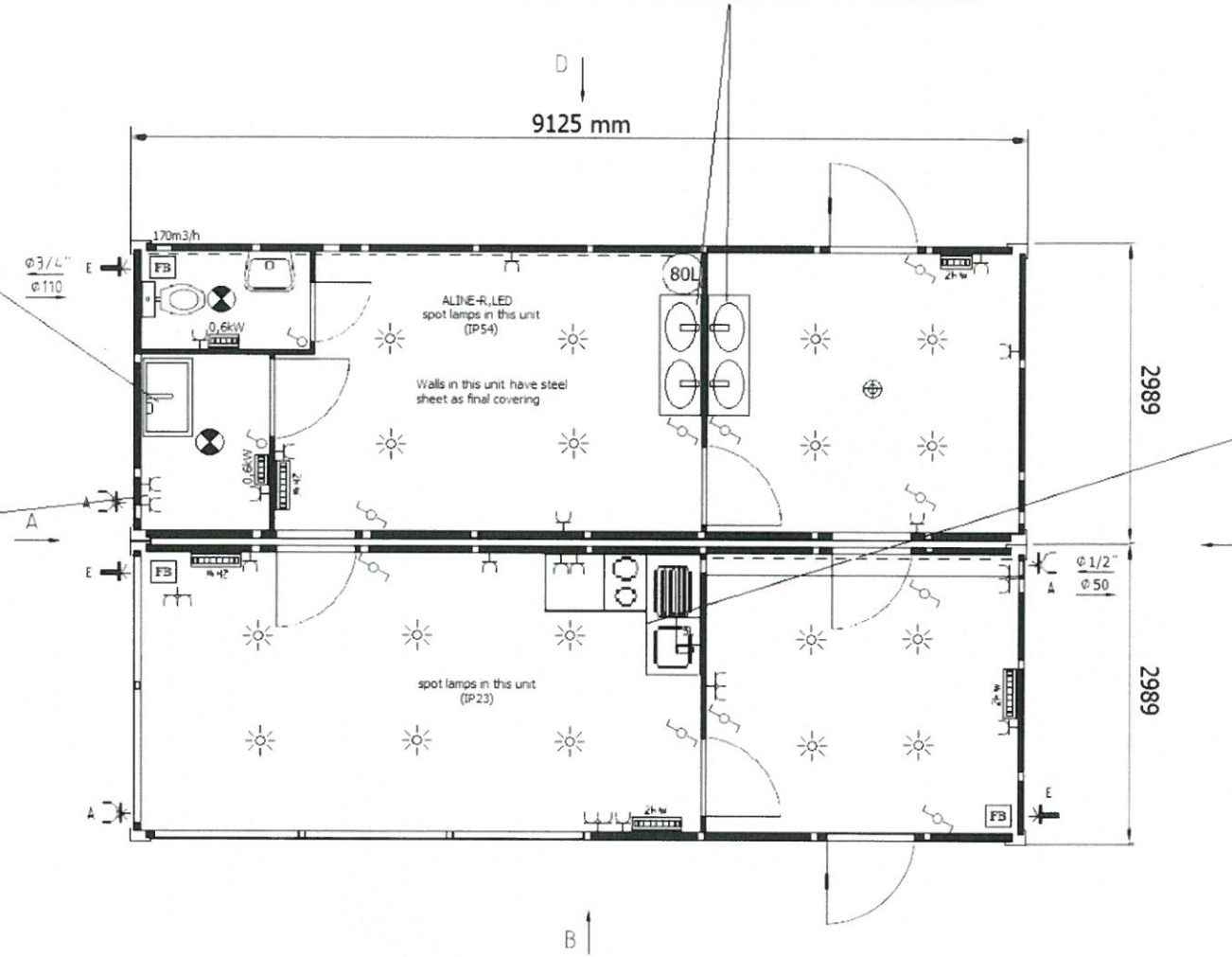
Water and electric connection for washing machine and el. connection for drying machine

STANDARD DOUBLE WASHBASIN (OFFERED MIXING TABS HAVE ELECTRONIC SENSOR)

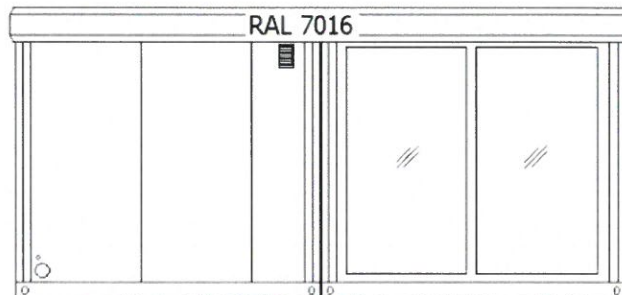


Vedlegg L3  
1906 Breilstad Vestre -  
Brakke / Container for  
ansatte

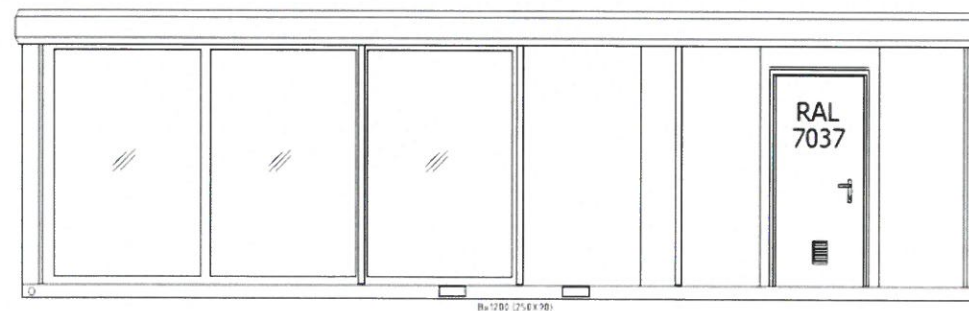
OFFERED L SHAPE KITCHEN



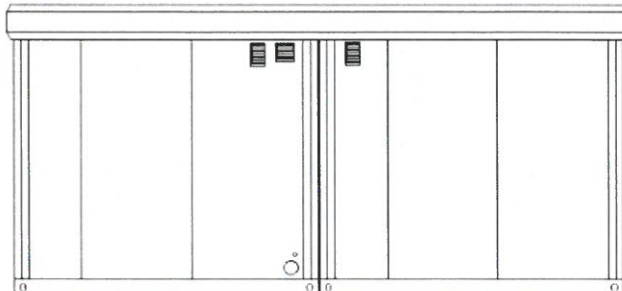
View A



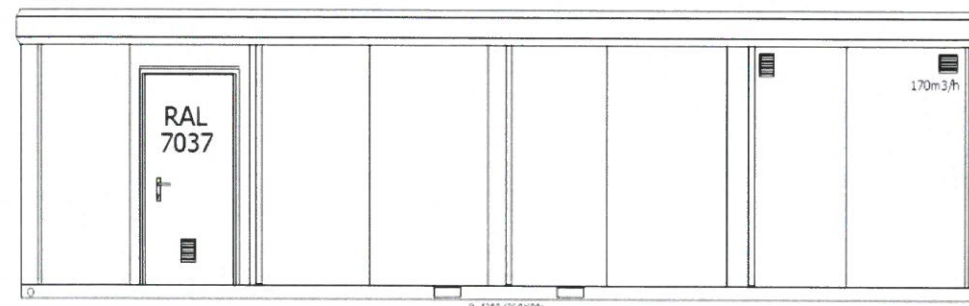
View B



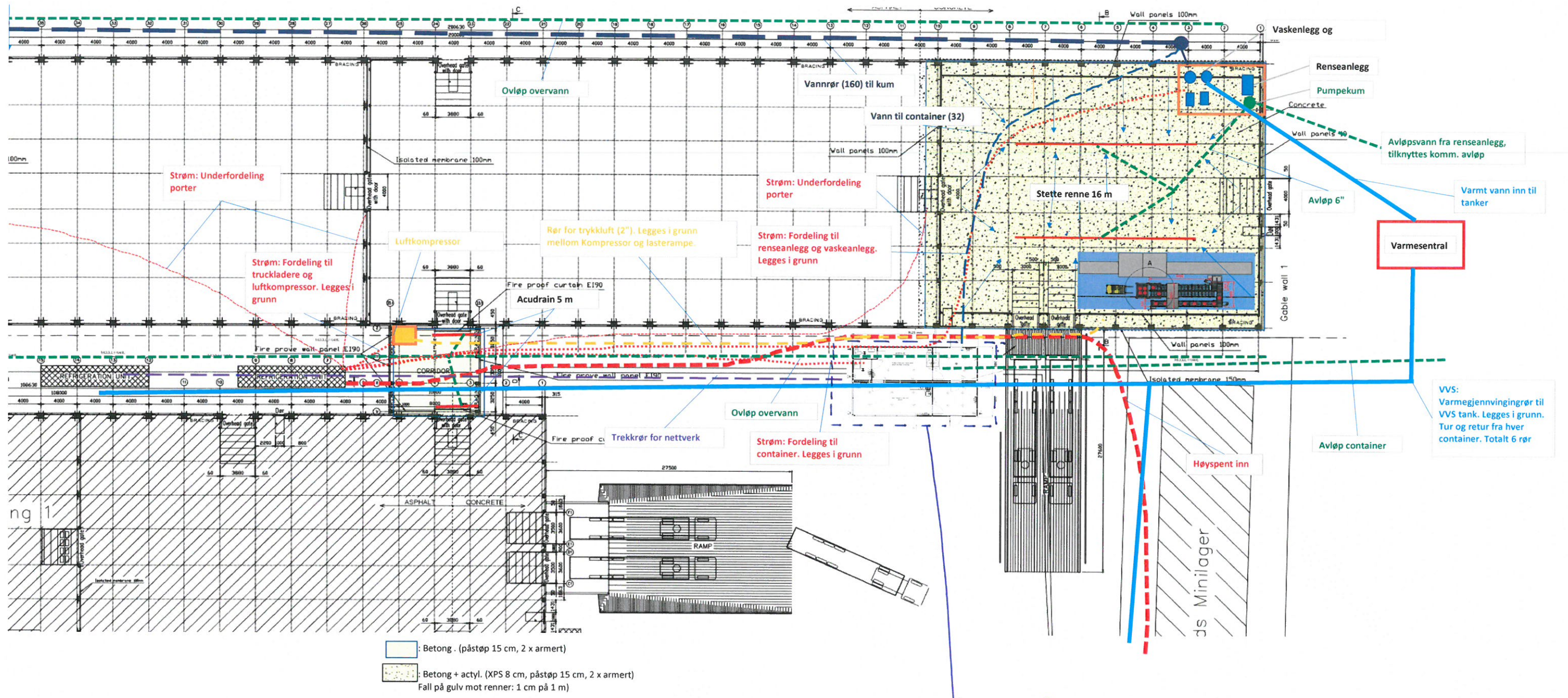
View C



View D



Vedlegg L4  
1906 Brekstad Vestre - Brakke/Container for ansatte



Brakke (Container med garderobe, kaalett, vaskeram og pauseram (Se detalj vedlegg L3))